

Ni-Sn (Nickel-Tin)

H. Okamoto

The Ni-Sn phase diagram in [Massalski2] was adopted from [1991Nas].

Based on essentially the same experimental phase boundary data used by [1991Nas], [2004Liu] assessed the Ni-Sn system thermodynamically and obtained the phase diagram shown in Fig. 1. The phase diagrams of [1991Nas] and [2004Liu] are very similar, but the latter is expected to be a better representation of scattered experimental data.

References

- 1991Nas:** P. Nash and A. Nash, Ni-Sn (Nickel-Tin), *Phase Diagrams of Binary Nickel Alloys*, P. Nash Ed., ASM International, 1991, p 310-318
- 2004Liu:** H.S. Liu, J. Wang, and Z.P. Jin, Thermodynamic Optimization of the Ni-Sn Binary System, *Calphad*, 2004, **28**(4), p 363-370

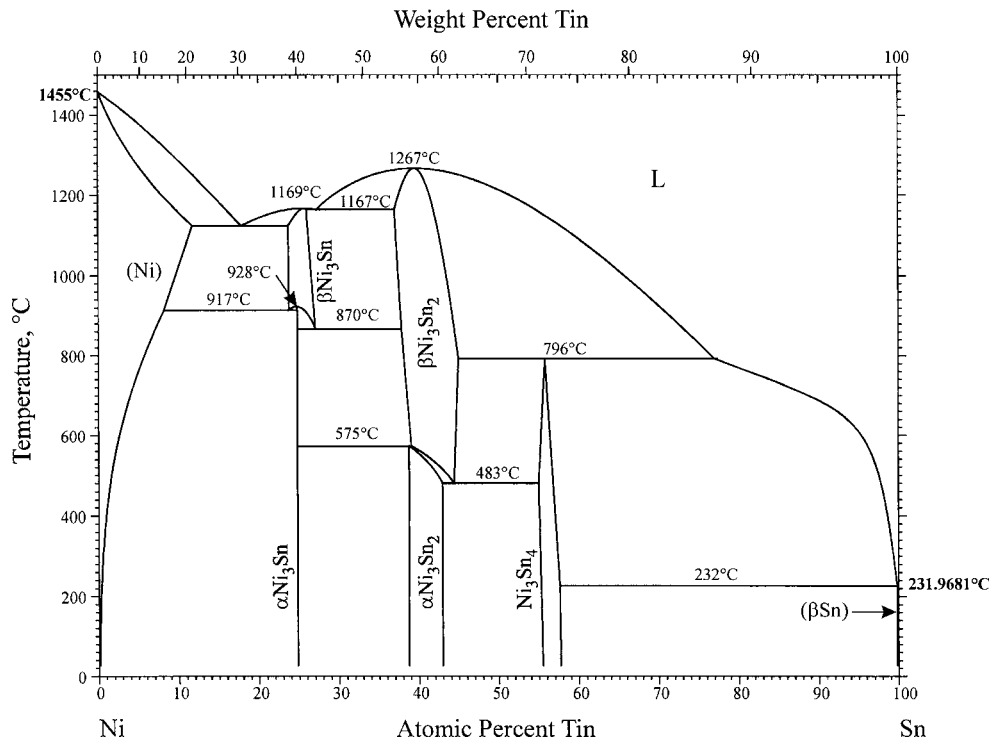


Fig. 1 Ni-Sn phase diagram